

Linchfield Academy



Year 5 Homework Grid

This term, the homework grid is based around our topic 'Natural Resources'. Homework can be brought in to share with your class on a Friday.

Reading:

Read the extract.

Answer the vocabulary questions. Make sure you understand word meaning in context.

Maths:

This term we will be looking at Statistics. Use the tables on the following sheet to answer and solve the statistic questions. Make sure to read the questions carefully.

PSHE:

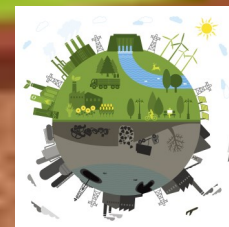
This term we are looking at Healthy and Safer Lifestyles. Design an informational poster which explores and explains the importance of a healthy lifestyle and gives examples of how we can maintain our health.

Geography:

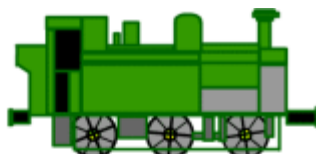
Design an information poster on different types of energy e.g. wind energy, solar, geothermal, hydro-power. Outline what each renewable energy does, its purpose, how it helps the environment and any limitations it may have.

Writing:

Write a persuasive speech on the use of renewable energy. Introduce the issue of climate change and how it affects our world. Use statistics which demonstrate the impact we have had. Suggest alternative sources of energy and why it would help our planet. Remember to persuade!



The table shows the cost of train tickets from Swanage on the steam railway.
Answer the questions below and use the squared paper to help with any working out.



From Swanage to		Herston	Harman	Corfe
Adult	single	£1.90	£3.70	£4.85
	return	£3.60	£5.65	£7.75
Child	single	£0.85	£1.65	£2.35
	return	£1.35	£3.25	£3.95

1. What is the total cost for a **single** journey to **Corfe** for 2 adults and 2 children?

£

2. How much more is a **single** adult ticket to go to **Herston** than for a child?

£

3. How much more does it cost 3 adults to go on a **return** journey to **Harman** than to **Herston**?

£

4. How much less does it cost two children to make a **return** journey to **Herston** than for two adults?

£

This chart shows the distance in miles between five cities.

	Aberdeen	Brighton	Lincoln	Newcastle	Sheffield
Aberdeen		605	387	234	393
Brighton	605		216	349	233
Lincoln	387	216		154	47
Newcastle	234	349	154		131
Sheffield	393	233	47	131	

Use the table to answer these questions.

1. How far is it from Lincoln to Brighton?

miles

2. Alan goes from Aberdeen to Newcastle and then on to Sheffield.
How many miles does he travel?

miles

3. Mary travels from Brighton to Lincoln.
Paul travels from Brighton to Newcastle.
How much further does Paul travel?

miles

4. Gary travels from Aberdeen to Newcastle and back.
How far did he travel?

miles

It was late spring and the last of the afternoon sun was reaching lazily through the cotton wool clouds that were moseying across the azure sky. As a balmy breeze whispered through the trees, clusters of insects frolicked over the surface of the glassy lake, twisting and twirling in time to the gentle hum of their wings. Imposing lines of trees guarded the water's edge, their trunks contorting under the weight of their fruit-laden branches.

This tranquil park was a precious sanctuary for residents of the Bethrow Estate – as well as providing sorely needed space for nature. The throaty hubbub of overworked engines, the shrill cry of hastily applied brakes; living next to a motorway didn't come with many perks but now the future of this safe haven was beginning to look uncertain.

1. 'As a balmy breeze whispered through the trees...' What is the meaning of the word balmy in this sentence?

2. 'Imposing lines of trees guarded the water's edge...' Explain the meaning of the word imposing in this sentence.

3. '...their trunks contorting under the weight of their fruit-laden branches.' What is the meaning of the word contorting in this sentence?

4. 'The throaty hubbub of overworked engines...' Use the context of this sentence to work out what hubbub means.
